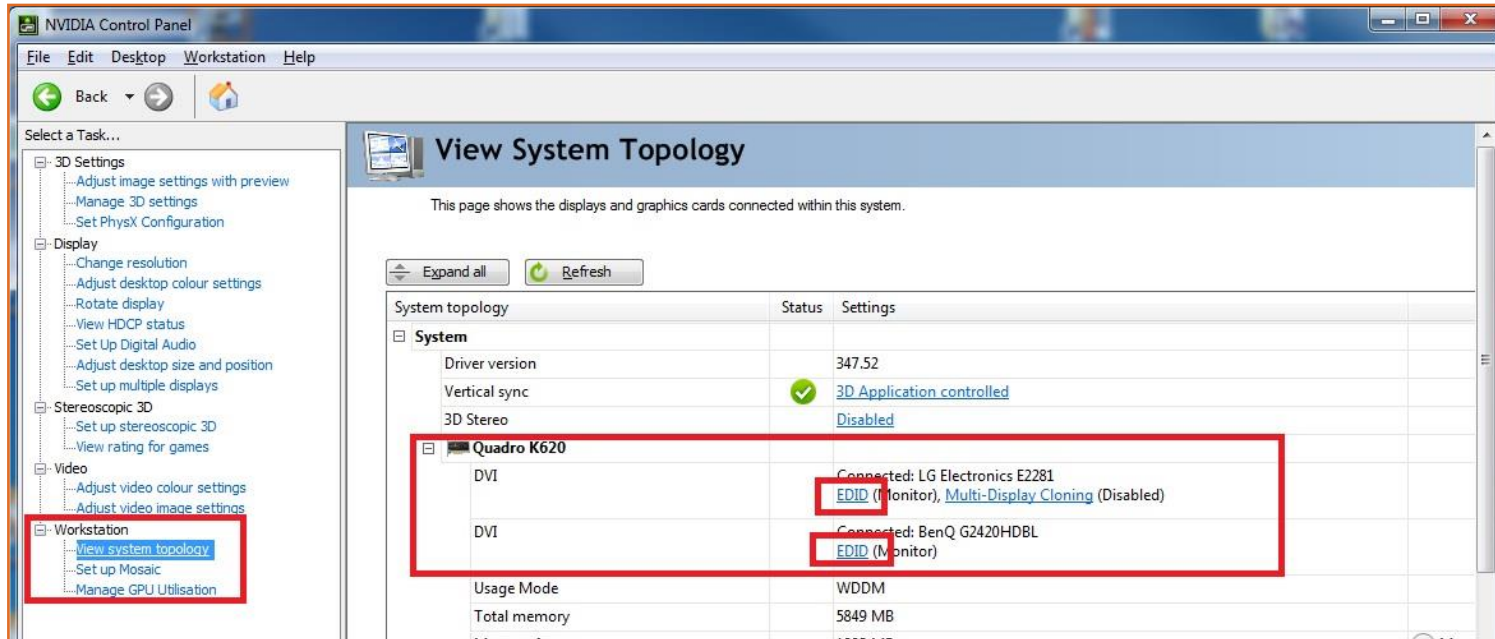


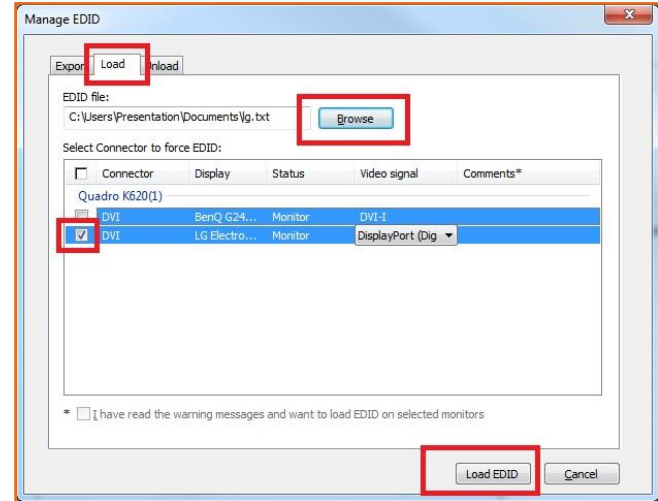
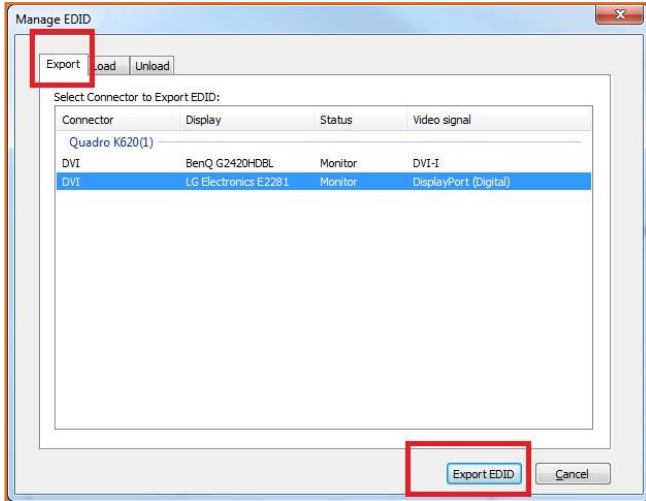


- When using more than 1 monitor display outputs, it's important to tell the operating system to never change its screen resolutions. This can be done by locking the EDID settings.
- This will prevent the OS from switching to 1-monitor view and allows the display output(s) to be removed without consequences.
- Warning: EDID locking means connecting a different monitor after the EDID has been 'locked' might fail to work or even damage the monitor. Use with care.
- To configure EDID, open the Nvidia control panel, right-click on the desktop and select it.

- On the left side, select 'View system topology'. Inside the system topology select the EDID button as indicated in the red bracket.



- The process is to store the EDID file and then loading it back.
- First export the EDID file.
- Then go to the 'load' tab, select the file you just saved and select the correct output.
- Press 'load EDID' and the process is completed.
- Repeat for the other screen(s).



- When finished, you must see '(File)' as the EDID source.
- Hint: remember to remove the EDID lock before changing screens if needed.

