

The following slides will show you the correct settings for the Lumens VC-A50P cameras.

Please compare your settings with the settings at our slides to be sure you do have the correct settings.

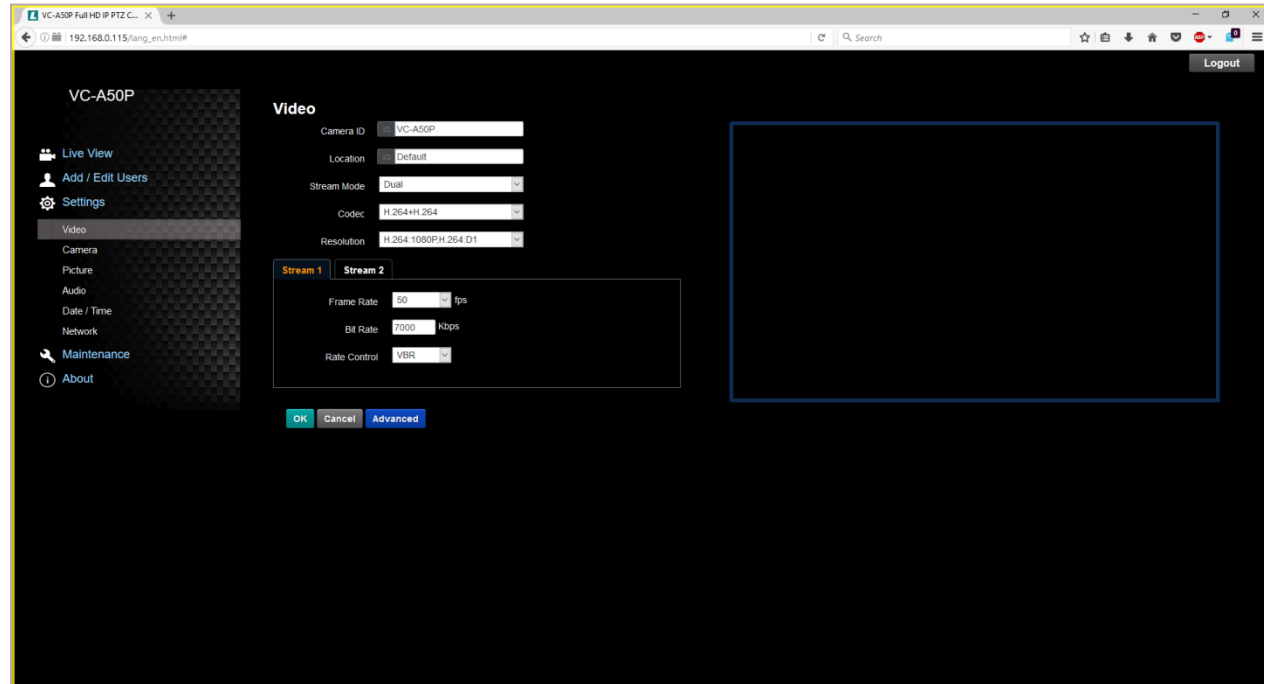
Make sure you do have firmware version **VIL101c** or later installed on the camera.

Please compare the settings of the Lumens camera's with the settings in the following screenshots.

At the **Settings** → **Video** page:

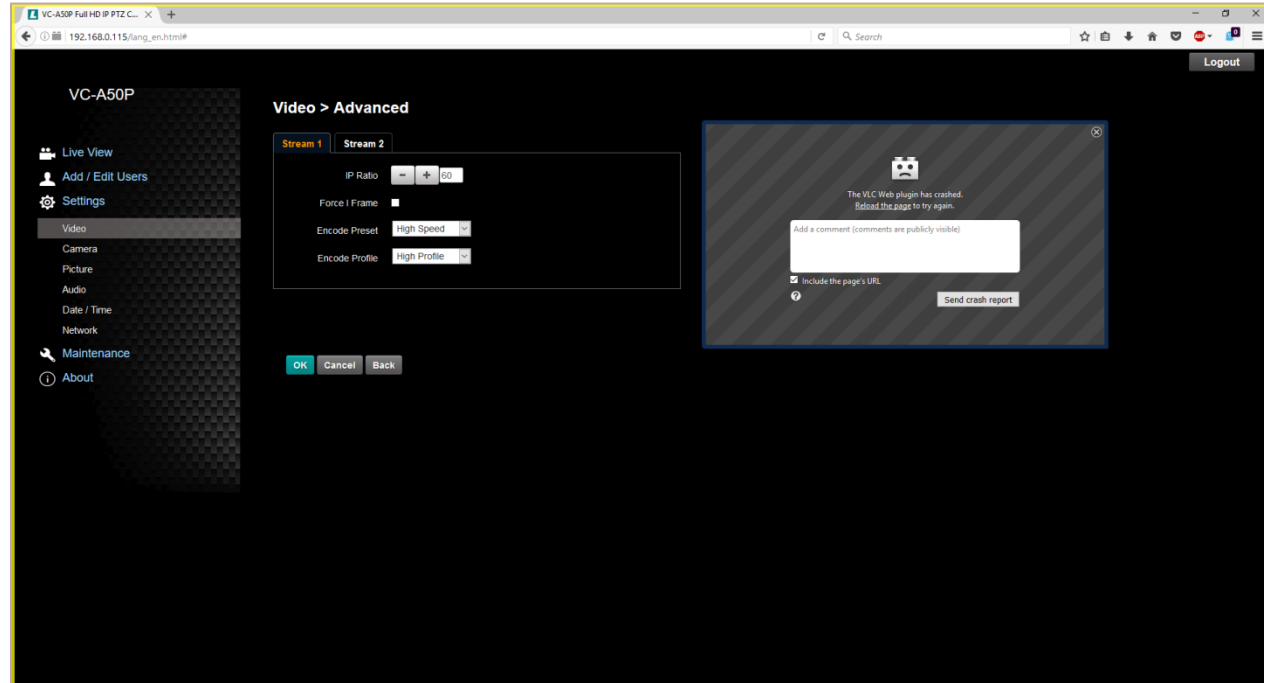
For high end workstations:
Resolution can be set to **1080P** and
the **Bit Rate** can be set to **7000**.

For slower systems:
Resolution can be set to **720P** and
the **Bit Rate** can be set to **4000**.



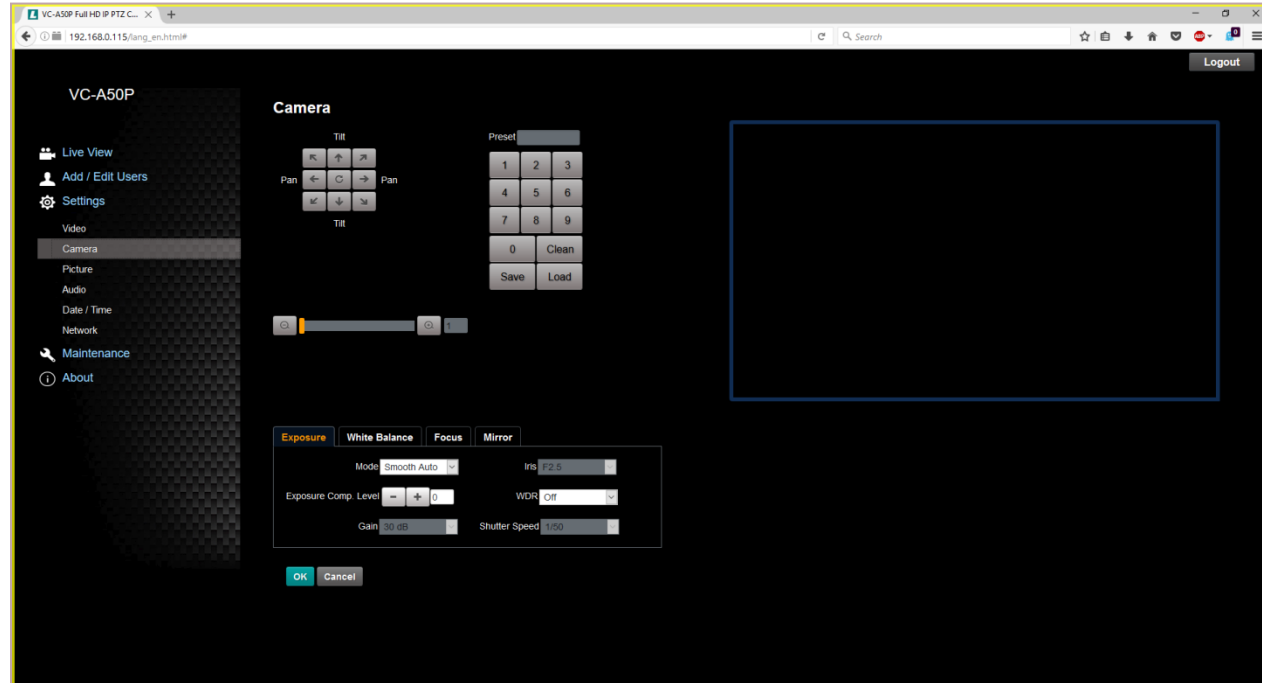
Please compare the settings of the Lumens camera's with the settings in the following screenshots.

At the **Settings** → **Video** → **Advanced** page change **Encode Pre-set** to **High speed**.



Please compare the settings of the Lumens camera's with the settings in the following screenshots.

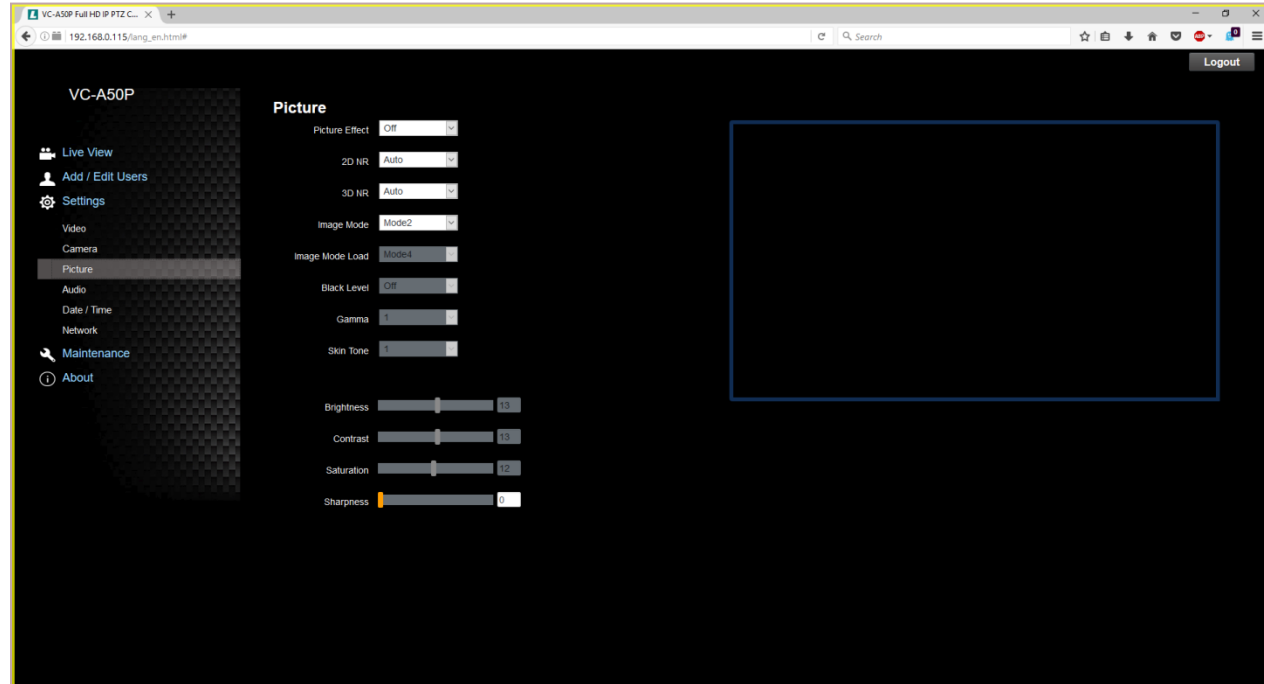
At the **Settings** → **Camera** page, no changes are needed.



Please compare the settings of the Lumens camera's with the settings in the following screenshots.

At the **Settings** → **Picture** page
change **2D NR** and **3D NR** to **Auto**.

Change **Sharpness** to **0**.



Please compare the settings of the Lumens camera's with the settings in the following screenshots.

At the **Settings** → **Network** page, no changes are needed.

Please configure your DHCP router to assign a permanent IP-address for each camera

