

These slides will guide you thru the installation progress of the MVI Engineering software. We will show you exactly how to install the software correctly.



IMPORTANT: DICENTIS WIRELESS AND DICENTIS WIRED ARE 2 DIFFERENT SYSTEMS! IF YOU DO HAVE A DICENTIS WIRED SYSTEM, DO NOT READ THIS MANUAL BUT PLEASE READ THE MANUAL FOR DICENTIS WIRED SYSTEMS INSTEAD.

At first, we advice to test the dicentis wireless system before installing the MVI software. Therefore you have to setup the dicentis wireless system as Bosch describes in their manuals. The steps below are also required to be able to use the MVI software.

- **Step 1:** Setup the dicentis wireless system as Bosch describes in their manuals.
- **Step 2a:** Open your internet browser and enter de IP address of the WAP or:
Step 2b: Install **Bosch DNS-SD** which can be downloaded [here](#), you can now enter: dcnm-wap.local to open de Bosch module.
- **Step 3:** Enter the username and password, (default username: Admin, no password needed).
- **Step 4:** Go to **Manage Discussion** and then activate a few units to see if they appear at the speakers list and requests list.
- **Step 5:** Go to **System Settings** → **Seats** to setup al seat settings of the dicentis wireless units.
 - Define if a unit is a dual or not, you need Bosch licences for that.
 - Define if a unit is able to vote, you need Bosch licences for that.*

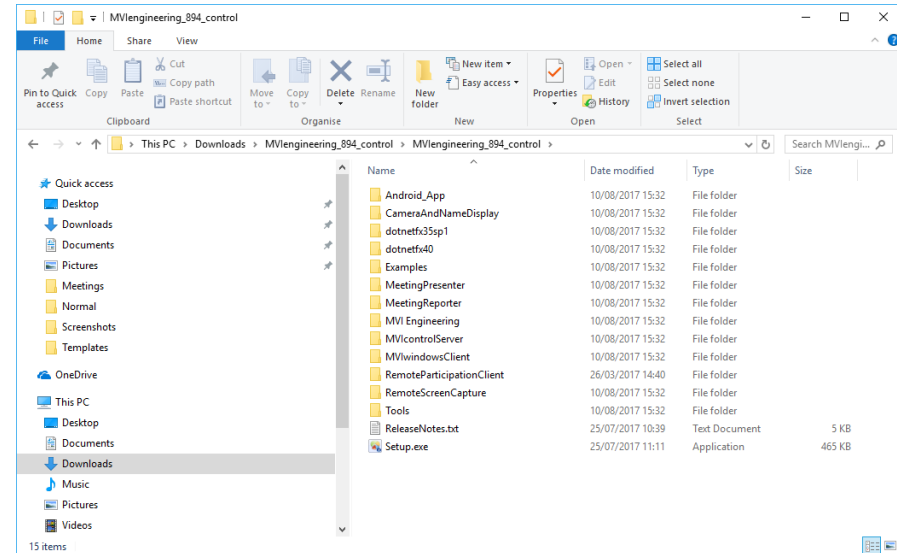
*Hint for dealers / installers, for a multimedia system the Bosch licences are not required, than you only have to order the MVI licences. For dicentis wireless you only need the Bosch voting licences, for Multimedia you only need MVI voting licences.

Please download the latest MVI AudioVisual software release.

- Download the latest software release.
- Extract the .zip before continuing the installation.

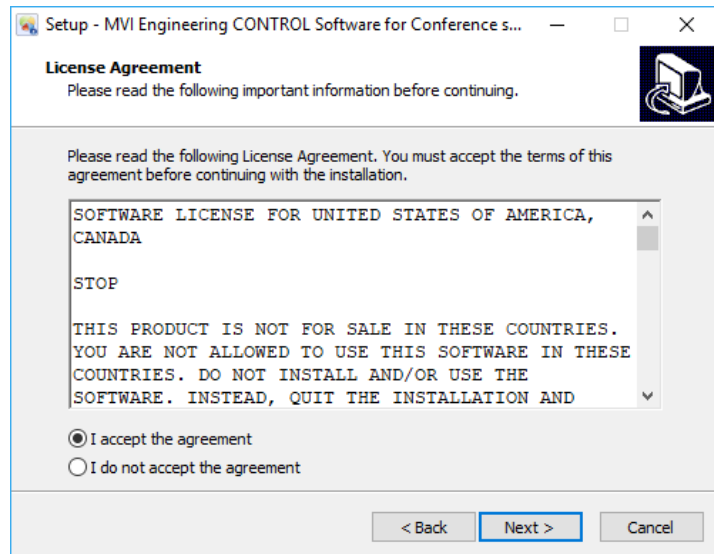
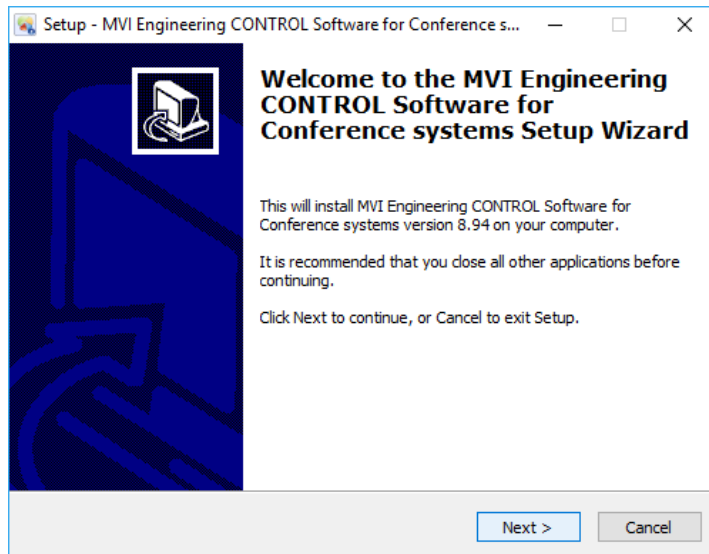
After you've extracted the .zip, you can start with the installation of the MVI Engineering software. Please follow the steps below.

- Please open the MVI Engineering folder.
- Run Setup.exe to start the installation.



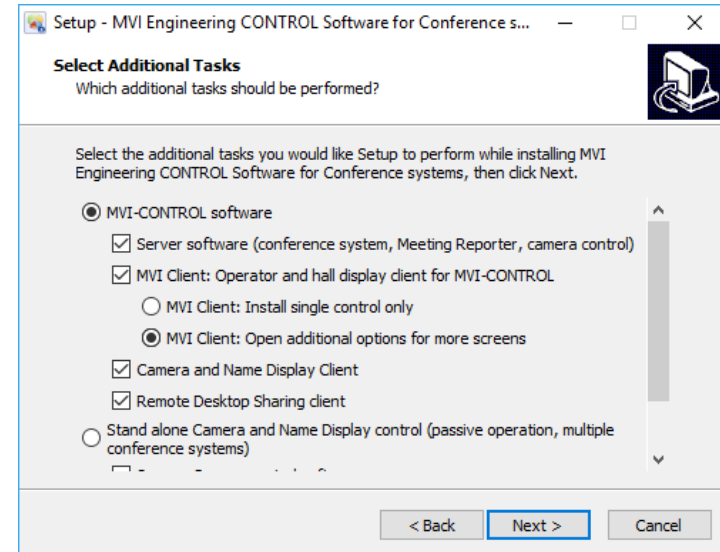
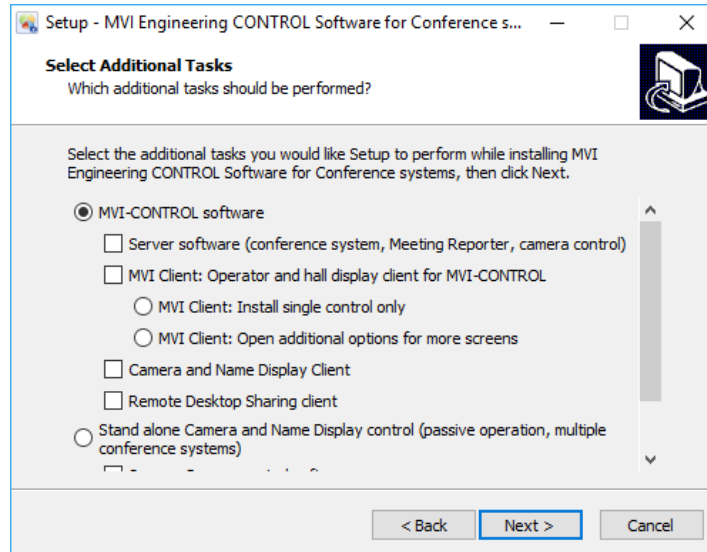
Follow the steps below to install the MVI Engineering software.

- At the welcome screen click **Next** to continue.
- Please read the License Agreement.
- Click **I accept the agreement** and then click **Next** to continue.



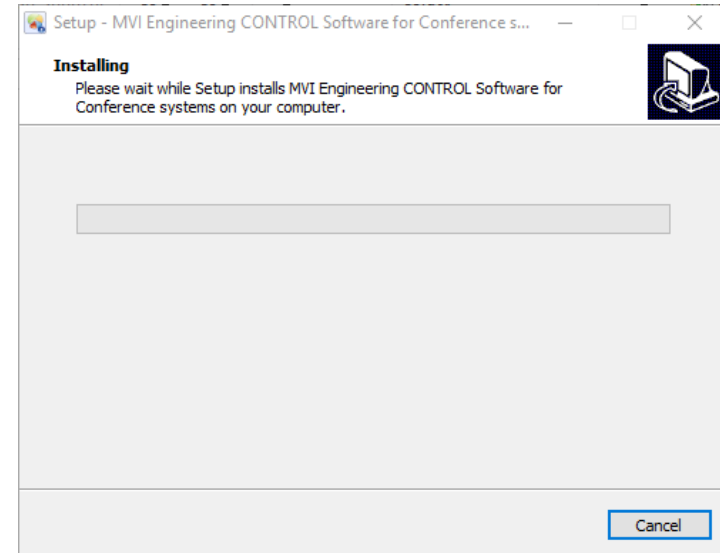
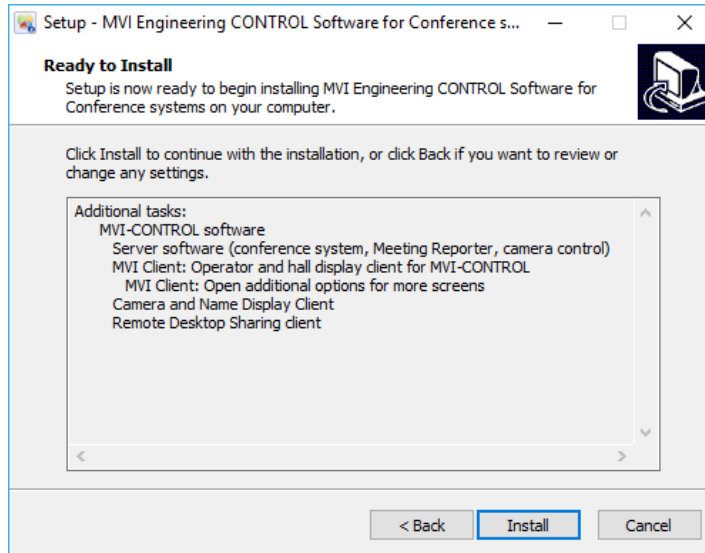
Follow the steps below to install the MVI Engineering software.

- Select **MVI-CONTROL software**.
- Select the additional tasks you want to install (depending on ordered licenses).
- Click **Next** to continue.



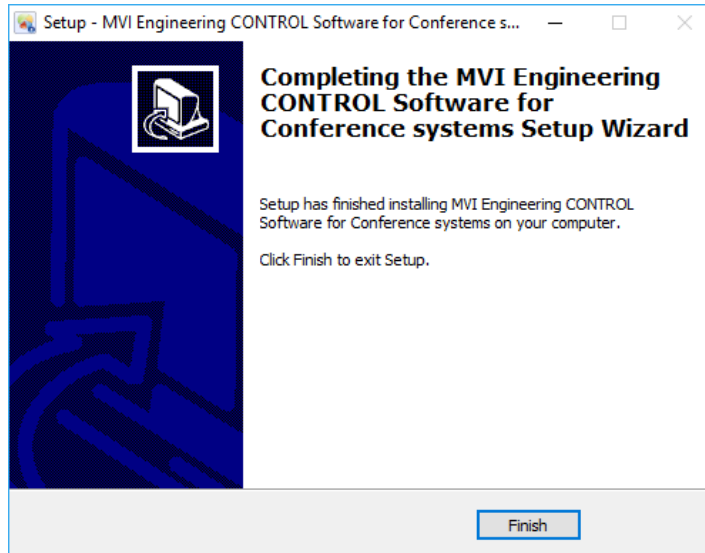
Follow the steps below to install the MVI Engineering software.

- Check if you've enabled all needed software components.
- Click **Install** to continue.
- Wait while the installation is running.




After you've extracted the .zip, you can start with the installation of the MVI Engineering software. Please follow the steps below.

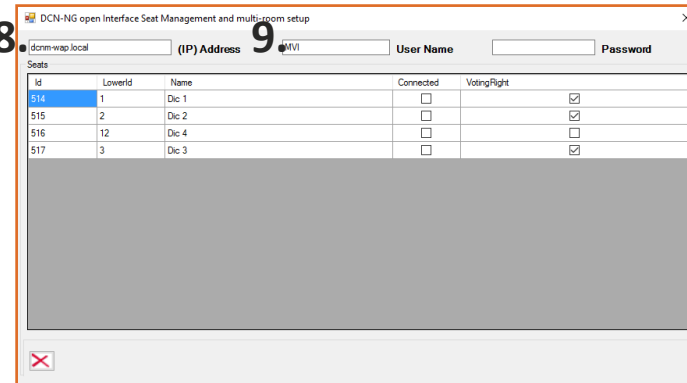
- When the setup finished the installation click **Finish** to close the installer.



It is mandatory to create an extra user account for dicentis wireless that can be used by the MVI Engineering software.

- **Step 1:** Open an internet browser and enter the IP address or go to: dcnm-wap.local.
- **Step 2:** Enter the username and password, (default username: Admin, no password needed).
- **Step 3:** Go to **System settings** then go to **Users**.
- **Step 4:** Click at the  button to create a new user.
- **Step 5:** At the **First name** and **Last name** field enter **MVI**, also enter **MVI** in the username field. Select all five user rights options and then click **Save**.
- **Step 6:** Start the mvi software and open the mvi control server.
- **Step 7:** Go to **Admin** and click **Seat Management: dicentis wireless**.
- **Step 8:** In the **(IP) Address** field enter the IP address or enter **dcnm-wap.local**.
- **Step 9:** In the **User Name** field enter **MVI**.

All connected 8 units will now appear in the Seats list where you can see information about the devices.



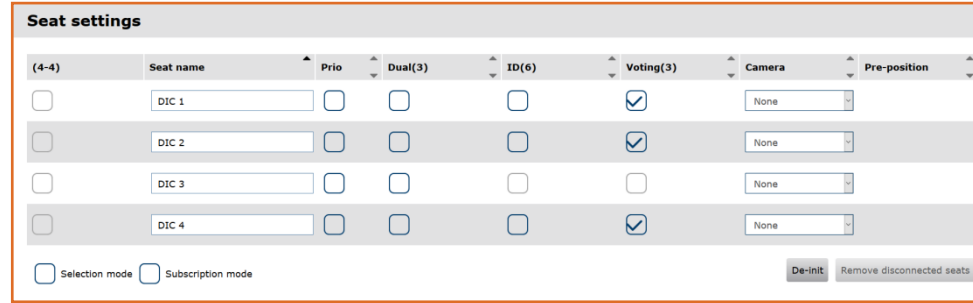
There are a few more settings that have to be done.

➤ **Step 1:** Open a internet browser and enter the IP address or go to: dcnm-wap.local.

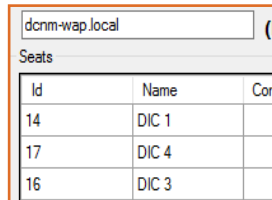
➤ **Step 2:** Enter the username and password, (default username: Admin, no password needed). Don't use the user account you created for MVI software since this user account is used by MVI software you will be automatically logged out after a few seconds and you will not be able to do any changes in the Dicontis wireless system.

➤ **Step 3:** You can change all seat names, but this is not mandatory. For example change them into DIC 1, DIC 2, etcetera. If you decide to change the names, use these names also at the Template Editor / Designer and in case of fixed seating in your meeting preparation (Excel document) as well.

➤ **Step 5:** Define if a unit is a dual unit, or a delegate needs to login with an ID card and or a unit needs a voting license.

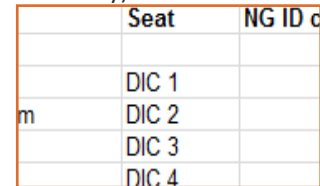


➤ Seat names dicentis wireless in Seat Management MVI Engineering software.



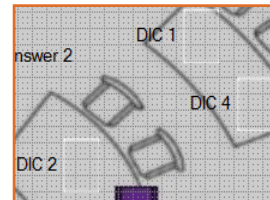
dcnm-wap.local		
Seats		
Id	Name	Conn
14	DIC 1	
17	DIC 4	
16	DIC 3	

➤ Seat names dicentis wireless in Excel document. (in case of fixed seating only).



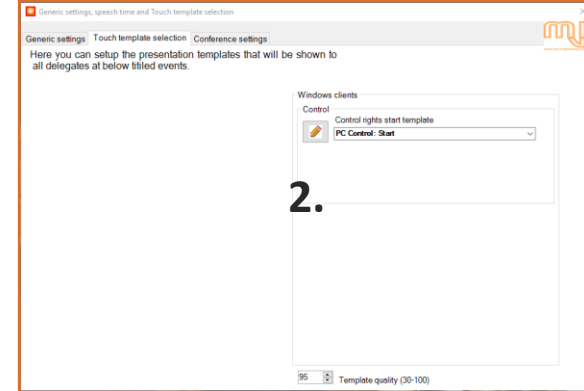
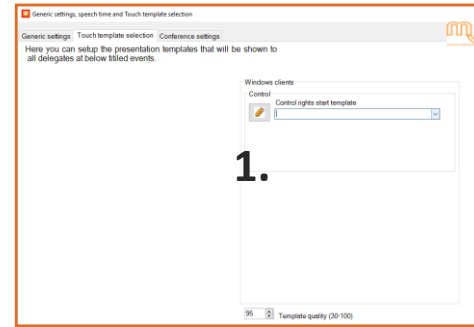
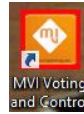
Seat	NG ID c
DIC 1	
DIC 2	
DIC 3	
DIC 4	

➤ Seat names dicentis wireless in Template Editor / Designer.



Please start the MVI software (Windows Client, Voting and Control Server and Meeting Reporter).

- **Step 1:** Open the **MVI Voting and Control Server**.
- **Step 2:** Go to **Templates** → **Touch Control Templates**. A window will open now, like picture **1** on the right side.
- **Step 3:** Select a start template from the dropdown menu, We prefer to select template **PC Control: Start** which we've created.
- **Step 4:** You see the name of the selected template (like picture **2**) the template will immediately appear at the **MVI Windows Client** window.



Hint: If you don't see any template at the dropdown menu, please check if you have started Meeting Reporter, templates only appear when Meeting Reporter is running.