



**AudioVisual**  
conference automation

# Configure audio with Dante Controller



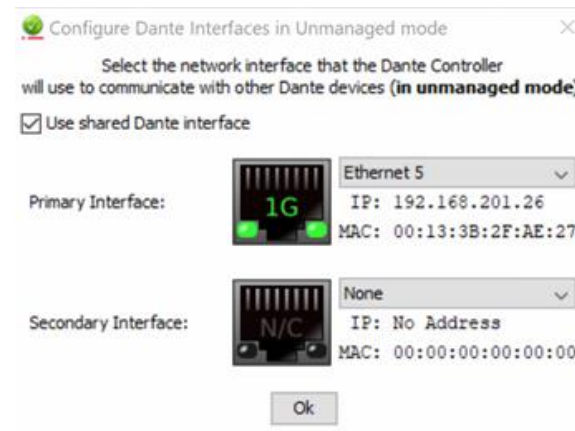
## Step 1

- Connect Dante AVIO Analog Output Adapter to output channel 1 of the Bosch APS and Connect a network cable to a POE switch which is connected to the machine where Dante Controller is installed.



## Step 2

- At the configuration  of the Dante Controller select the Primary Interface (the network card where the Dante AVIO Analog Output Adapter is connected to). *The secondary Interface is not needed for now.*



## Step 3

- At the Dante Controller go to the Routing tab.
- Expand the Dante Receivers and Dante Transmitters to see the connected Receivers and Transmitters.
- Now place a checkmark as shown inline with CH1 of the connected Dante Receiver and at 01 of the connected Dante Transmitter.

